

Construction Weekly Update

Week of July 22nd, 2019

School District of Manawa



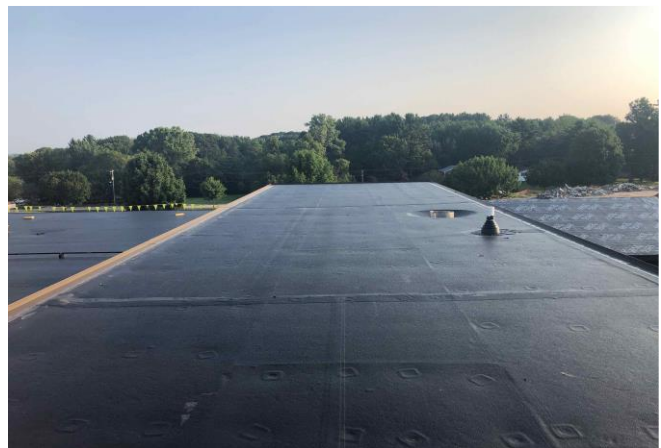
New dumpster enclosure at MES



Concrete sidewalk complete at front of MES



Roof replacement LWJSHS



New membrane roof LWJSHS

Update

Site concrete is scheduled to wrap up next week

Asphalt pavement is scheduled to be installed week of 8-5

Roof replacement is wrapping up at LWJSHS next week, and crews will be moving over to MES

About Hoffman

Hoffman Planning, Design & Construction, Inc. is an integrated Total Project Management firm based in Appleton, Wisconsin. We partner with our clients to create innovative designs and build high quality, functional, attractive, energy efficient facilities at costs at or below projects delivered using traditional design and construction methods. Currently in our fifth generation of leadership, Hoffman continues to deliver the same expert service and superior value our clients have come to appreciate.